

SR-165 @ 3200 S & MILL RD. NIBLEY UTAH WESTSIDE LAND-USE CONCEPT



SYMBOL	NOTES	QTY	
	PK - PARKING	478,608 sf	10.99 acres
	CM - COMMERCIAL MEDIUM BOX	237,269 sf	5.45 acres
	CS - COMMERCIAL SMALL	158,408 sf	3.64 acres
	RH - RESIDENTIAL HOUSING	45,509 sf	1.05 acres
	HW 165 - HIGHWAY 165	227,632 sf	0.52 acres
	TS - TOWN SQUARE	94,247 sf	2.16 acres
	R.O.W.	215,896 sf	4.96 acres
	LANDSCAPED AREA	458,386 sf	10.52 acres

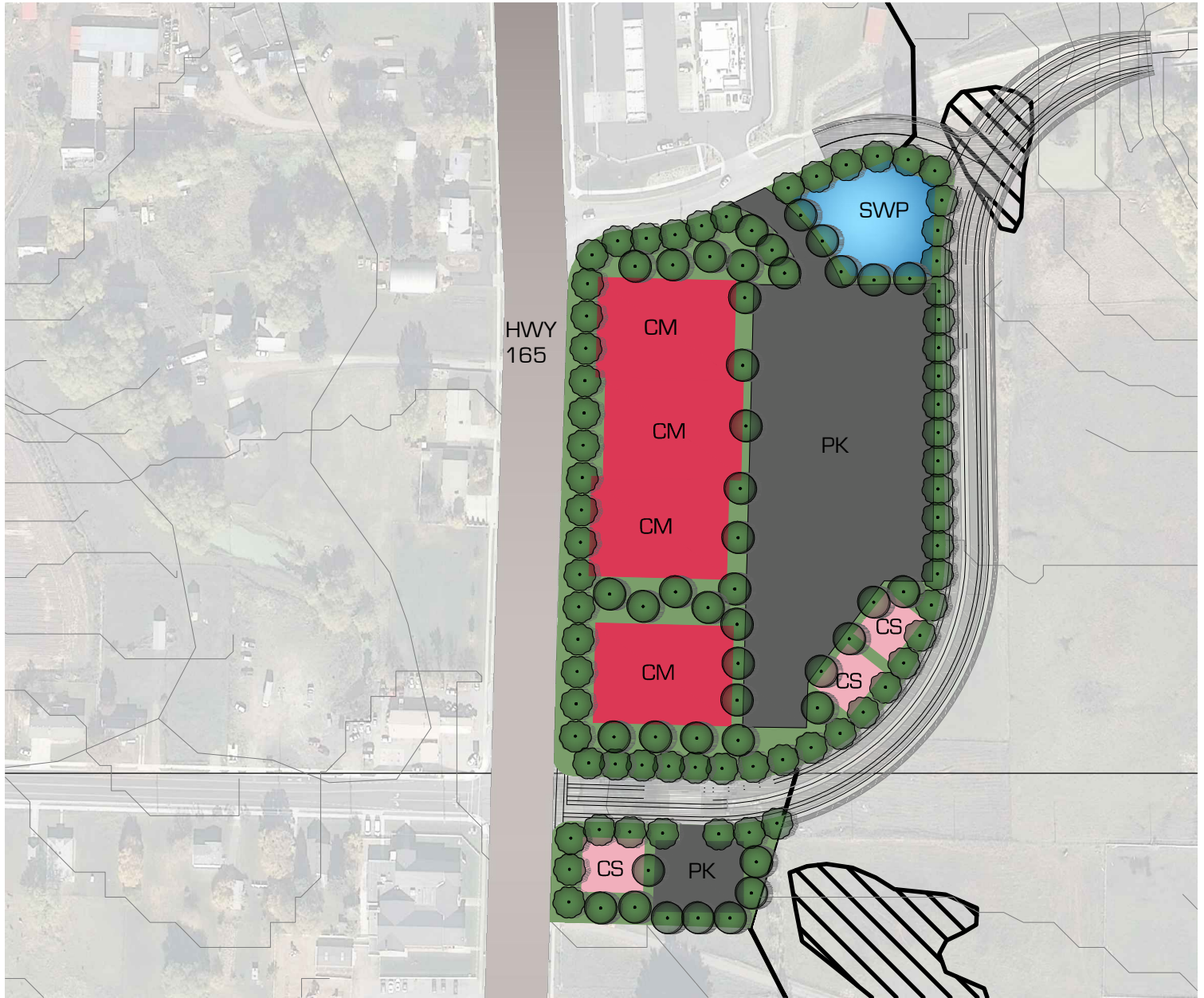








civilsolutionsgroup inc.

540 W GOLF COURSE RD SUITE B1
PROVIDENCE, UT 84332
P: 435.213.3762
F: 435.213.3778
www.civilsolutionsgroup.net



SR-165 @ 3200 S & MILL RD. NIBLEY UTAH EAST SIDE LAND-USE CONCEPT



SYMBOL	NOTES	QTY	
	PK - PARKING	133,029 sf	3.05 acres
	CM - COMMERCIAL MEDIUM BOX	93,600 sf	2.15 acres
	CS - COMMERCIAL SMALL	14,000 sf	0.32 acres
	HW 165 - HIGHWAY 165	227,632 sf	5.23 acres
	LANDSCAPED AREA	140,336 sf	3.22 acres
	SWP - STORM WATER POND	20,313 sf	0.47 acres



civilsolutionsgroup inc.

540 W GOLF COURSE RD SUITE B1
PROVIDENCE, UT 84332
P: 435.213.3762
F: 435.213.3778
www.civilsolutionsgroup.net

